

AISHWARYA RESIDENCE



Foreword

Modern Architecture: The design is characterized by clean lines, sharp angles, and a lack of traditional ornamentation. It prioritizes functionality and simplicity over decorative complexity. The building has a box-like massing, common in modern design. The structure is relatively narrow and tall, emphasizing verticality. This suggests a likely application for urban or sub-urban infill lots where space is constrained, maximizing living area vertically.





PROJECT DETAILS

Location	Ecr, Chennai,Tamilnadu
Firm	DEZINE & BUILD
Principal designer	Rehan
Project team	Ar.Supriya Bharathi (interior) Akash (interior)
Project start Date	31-7-2025
Project End Date	25-10-2025
Number of Floors	G+1
Number of car parks	1
Vastu Compliant	YES



LIVING AREA

- The design employs an open-plan layout, seamlessly connecting the living area, dining space, and a view into the kitchen. This promotes a sense of spaciousness, better light flow, and facilitates social interaction.
- The open staircase is integrated into the living space. Its design, potentially using glass or minimal railing, aims to keep the space feeling light and connected rather than bulky.



DINNING & KITCHEN

- The dining space is Minimalist and Contemporary, designed for an open-plan flow with the adjacent living area (as seen in the previous image). The absence of a large pendant light over the table maintains a clean sightline and open feeling.
- The kitchen is clearly a modular design, characterized by its clean, geometric forms and efficient use of space. The layout appears to be an L-shape or U-shape to maximize counter space.

BEDROOM

The design achieves high compact efficiency by integrating sleeping and storage zone. Full-height and overhead built-in cabinetry maximizes vertical space, providing substantial storage while maintaining a clean, minimalist aesthetic. A window seat/nook is cleverly integrated into the window bay, creating a functional focal point that capitalizes on natural light and views.





LIVING AREA

- The design prioritizes minimalist aesthetics by limiting furniture to only essential pieces (TV unit, desk/shelf) and keeping decor sparse. Every element serves a practical purpose, reducing visual clutter.
- The walls are painted a light, creamy off-white or beige, providing a bright, neutral backdrop that maximizes the sense of space. The large-format light grey/off-white tile flooring further contributes to a clean, continuous look.



BEDROOM

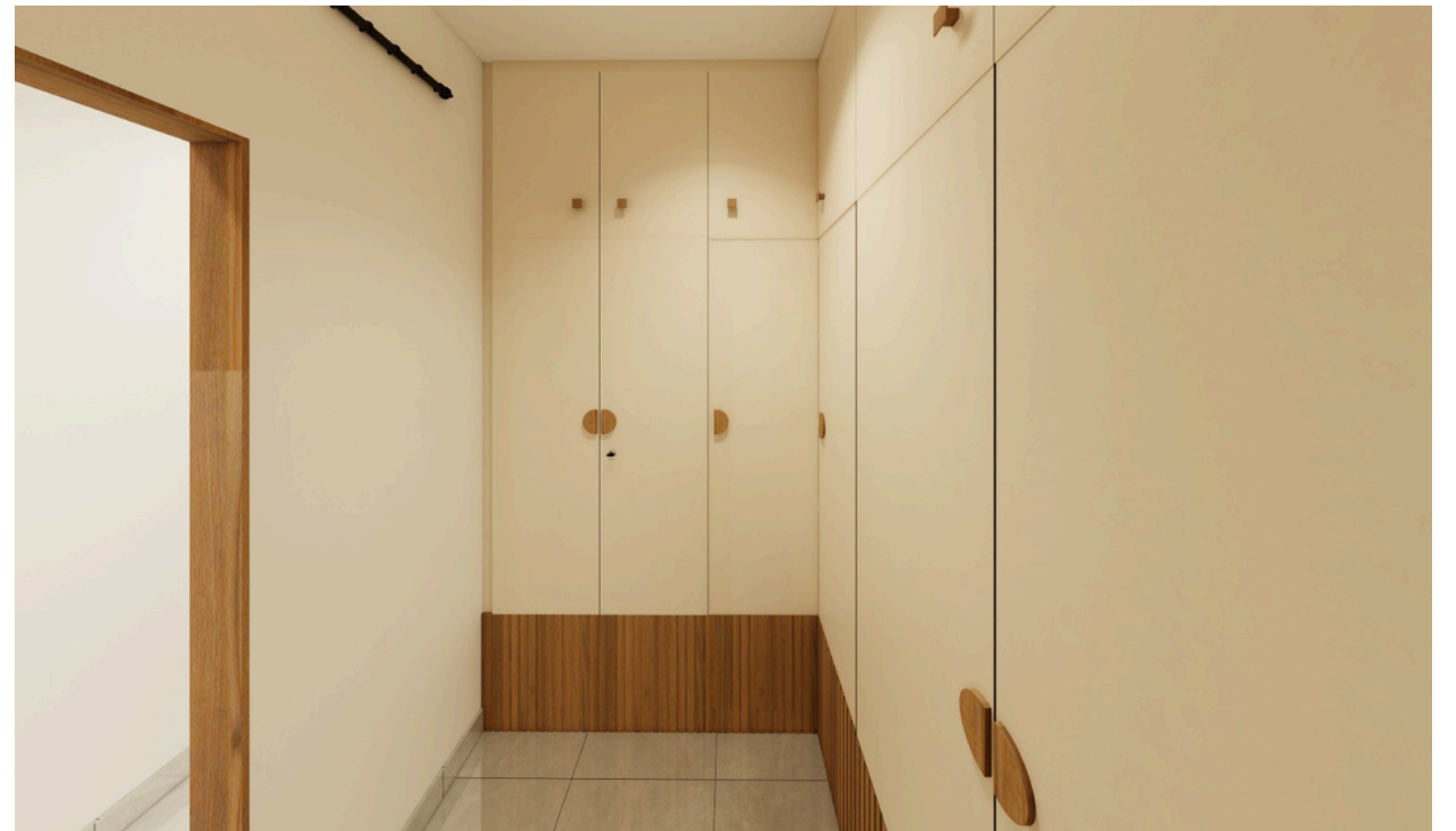
- The dominant color is a muted, earthy green or sage on the main walls, creating a calm, restorative mood. This color choice is grounded and complements the wood tones.
- The use of high-gloss white/off-white tiled flooring and the light color of the built-in storage units maintain a bright, neutral foundation, reflecting light and enhancing the perception of space.



RESTROOM

DEZINE & BUILD





WALK THROUGH



KIDS ROOM

- The room is clearly designed around a Space or Cosmic theme, utilizing elements like stars, planets, clouds, and a prominent rocket graphic in the central feature wall.
- While being a children's room, the color palette is deliberately muted and sophisticated. It uses a foundation of light grey, white, and wood tones, with pops of soft blues, yellows, and black for the mural, preventing the room from feeling overly bright or immature.



RESTROOM



BALCONY

This narrow space appears to be a balcony, passage, or corridor sitting area, designed with a Minimalist and Coastal/Natural Contemporary aesthetic, emphasizing light, warmth, and simplicity.

Space Utilization

- The design efficiently utilizes a long, narrow footprint, transforming what could be a simple passageway into a functional, intimate relaxation zone.
- The area acts as a transitional space between an interior room (visible through the glass doors on the left) and the exterior/view (visible through the window on the right).



Material Palette



Wooden panel



Steel (Rafters)



Concrete



wooden flooring



Material Palette



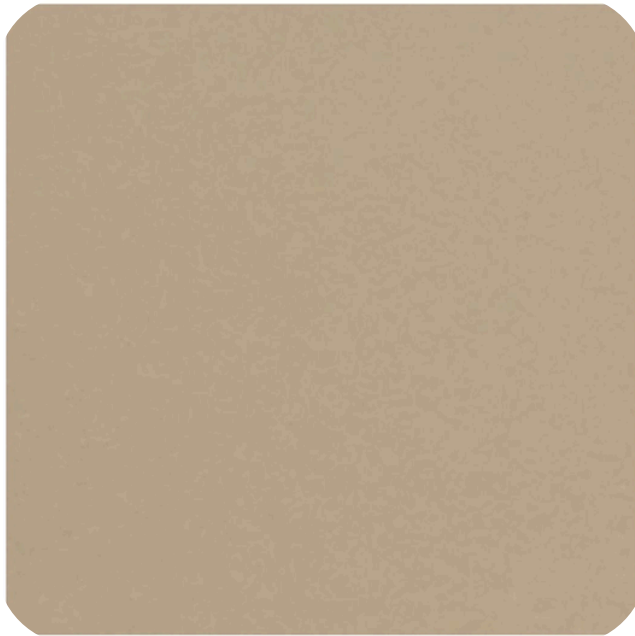
Wooden panel



Texture paint



Wood mica



beage mica

